

interface-ascii Rev 3.0.0 (Unified retro keyboard ASCII interface, ATmega 328P version)

This is the package for interface-ascii rev 3.0.0.

Service Requested

- Manufacturing and inspection to IPC class 3 standard.
- RoHS compliant
- PCB Material: FR4
- Solder mask color: Green
- Silk screen color: White
- Layers: 2
- Copper thickness: 1 oz all layers
- Finish: HASL

Programming and labeling of microcontroller

None

Testing

- Test 100% testing of assemblies
- Standard PCB QA (bed of nails, test for shorts and opens)

Tracking

None

Packaging

Standard Packaging

Production Package

The ZIP file contains the following files: interface-ascii-Rev_3-pcbfab.zip
A ZIP file containing Gerbers; drill file; readme.txt readme file containing PCB fabrication directions; fab renderings, etc.

This letter.

Renderings-top-interface-ascii-Rev_3-Production.jpg A JPEG file containing a reference for PCB parts placement, and 3D renderings of the front of the populated board (with components).

Renderings-bottom-interface-ascii-Rev_3-Production.jpg A JPEG file containing a reference for PCB parts placement, and 3D renderings of the back of the populated board (with components).

Model-3D-interface-ascii-Rev_3-Production.STEP: An exported 3D STEP file of the PCB with all components fitted.

Schematic-interface-ascii-Rev_3.0.0-Production.pdf A PDF file containing the schematics for this PCB.

BOM-interface-ascii-Rev_3.0-Production.csv BOM file, csv format

Subdirectory: labels_dir _labels.doc Labels for final packaging.

Subdirectory: programming_files_dir empty, not applicable.

Subdirectory containing programming files empty, not applicable

Subdirectory: diagrams_dir empty

Subdirectory containing diagrams or pictures related to production
empty

Subdirectory: work_instructions_dir Subdirectory containing work instructions, test procedures, etc.

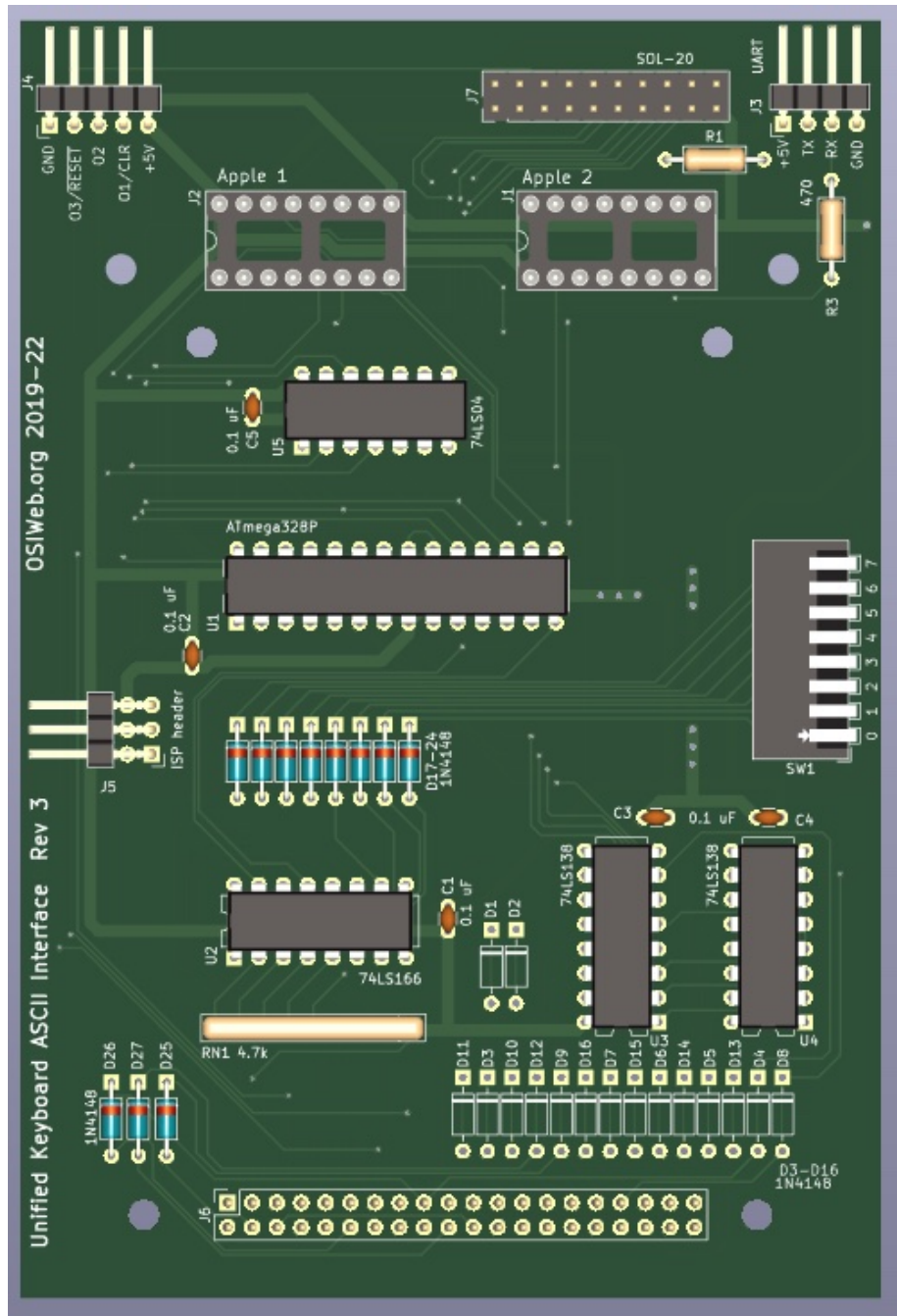


Figure 1: TOP side rendering of populated PCB

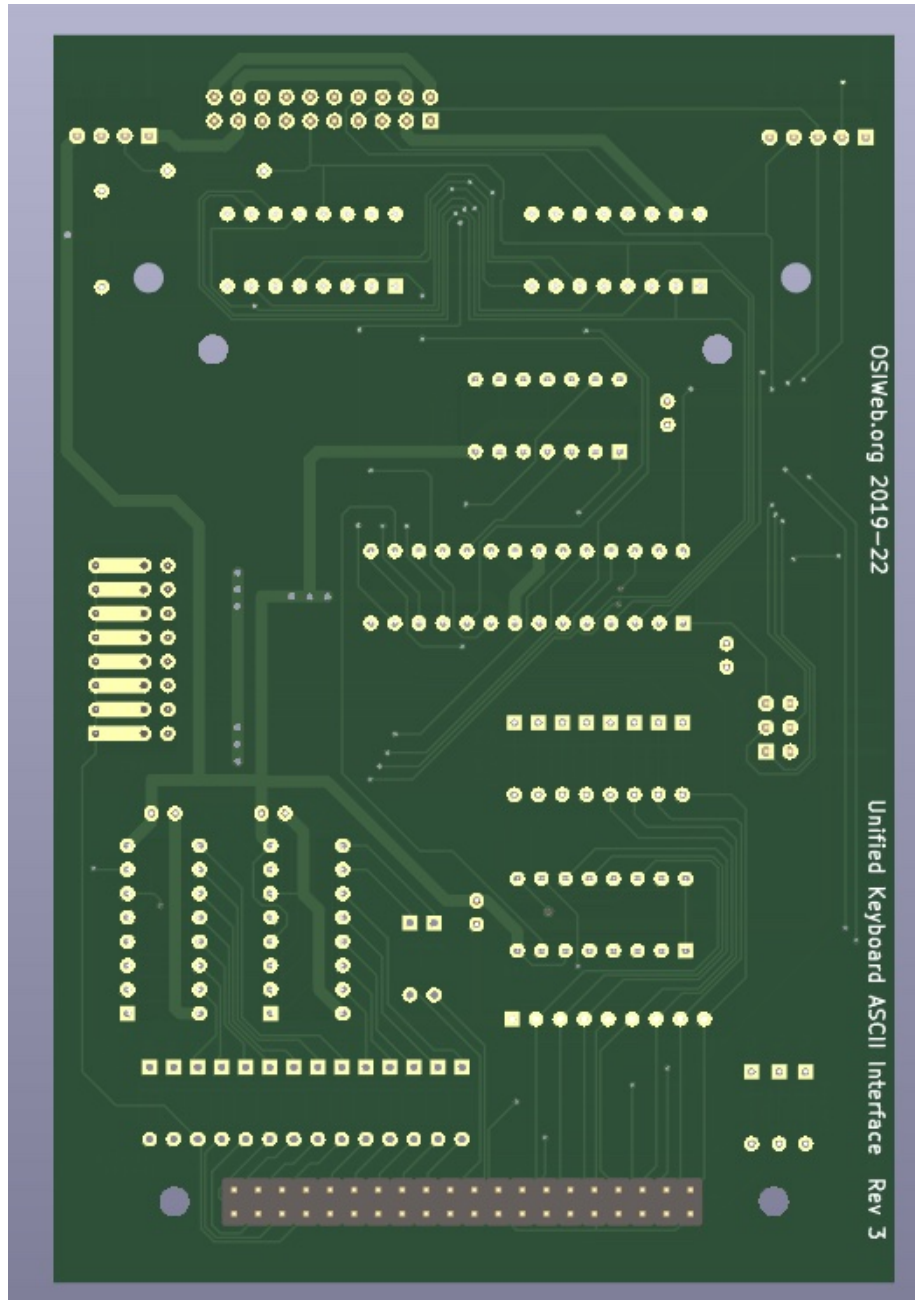


Figure 2: BOTTOM side rendering of populated PCB