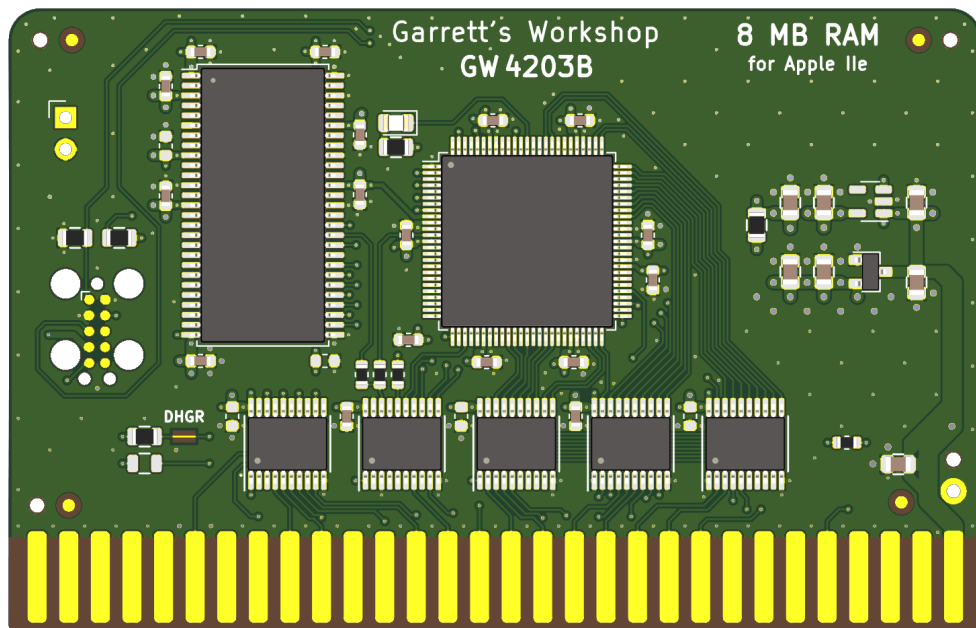


Garrett's Workshop

GW4203B "RAM2E II"

RAMWorks-compatible RAM Expansion Card for Apple IIe

User's Guide



Overview

RAM2E II (GW4203B) provides the Apple IIe with 8 MB of auxiliary memory and enables double-high-resolution graphics and 80-column text display modes.

Low-Power, SDRAM-Based Design

Thanks to a modern, low-power design, RAM2E II uses only 0.2 watts (40 mA @ 5V) in typical use and 0.4 watts (80 mA @ 5V) in heavy use with an accelerator¹. In contrast, a typical 80-column card consumes over 1 watt of power, and a 1 MB RAMWorks III consumes 2 watts or more. Unlike other IIe auxiliary memory cards, which are built with vintage asynchronous DRAM chips, RAM2E II uses modern SDRAM. This design allows for low power consumption and improved reliability over other memory cards using 15+ year old chips.

Small Size, Low-Profile

RAM2E II features a small board outline and is the thinnest Apple IIe auxiliary memory card ever produced, at under 4mm thin. Small and thin dimensions improve the mechanical compatibility between RAM2E II and peripheral cards installed into the IIe's Slot 1.

Adjustable Capacity, Highly Compatible

RAM2E II is highly compatible with existing software that utilizes RAMWorks memory standard. An adjustable capacity feature allows the memory size to be set to 64 kB, 512 kB, 1 MB, 4 MB, or 8 MB, improving compatibility with software expecting a particular memory capacity. Capacity settings can be set temporarily or saved in nonvolatile memory. The capacity adjustment utility is available on our website: <http://garrettsworkshop.com>

Ecologically Friendly, Gold-Plated PCB

RAM2E II is built with a lead-free, ENIG gold-plated, 4-layer PCB and is fully EU RoHS-compliant. All units are tested extensively before shipment, and only new parts are used to build RAM2E II.

Open-Source Design

RAM2E II's design is fully open-source. The schematics, board layouts, CPLD firmware, and utility software are all freely available for commercial and noncommercial use. To download the design files, visit the Garrett's Workshop GitHub page: <https://github.com/garrettsworkshop>

Note for Revision A Apple IIe Owners

If you own the uncommon revision A Apple IIe and are interested in RAM2E II, please read this! RAM2E II requires a small modification to be compatible with the with the rev. A Apple IIe. The modification consists of removal of the "DHGR" jumper resistor or cutting the associated jumper trace.

Revision A machines can be identified by their part number "820-0064-A" printed at the top of the motherboard near the slots. If you have a rev. A Apple IIe, please contact us before purchasing and we can make the modification before shipping your RAM2E unit. However, do

¹ Maximum power consumption measured with quadruple-unrolled auxiliary RAM read/write loop running on FastCHIP IIe accelerator at 16.6 MHz.

note that with the modification made, RAM2E II will not support the double-high-resolution graphics display mode.

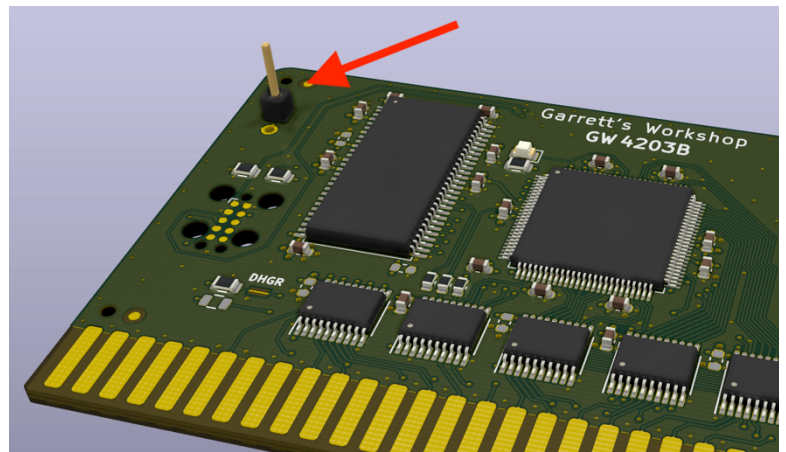
Note for A2Heaven VGA Scaler Owners

If you own the A2Heaven VGA Scaler and are interested in RAM2E II, please read this! There is a slight incompatibility between RAM2E II and the A2Heaven VGA Scaler as shipped.

As owners of the VGA Scaler will know, a long jumper wire is required to connect the VGA Scaler to the Apple II's 14.318 MHz clock signal. This arrangement causes glitches in the 14 MHz clock signal and is therefore not compatible with RAM2E II. Just a slight modification to the wire arrangement is necessary to fix the problem.

For customers purchasing a new RAM2E, we can at your request mount a special connector that supplies a buffered copy of the 14.318 MHz clock signal. Connect the VGA Scaler's 14 MHz clock wire to this header. A picture indicating the location of the 14 MHz clock header is shown to the right.

For customers who already own a RAM2E without the clock header, contact us and we can supply a special cable that can be used in place of the one included with the VGA scaler.



Either one of these solutions addresses the incompatibility, making RAM2E II fully compatible with the A2 Heaven VGA Scaler.

A technical description of the issue with the A2Heaven VGA Scaler follows:

The incompatibility involves the mishandling of the Apple II's 14.318 MHz master clock signal by the VGA Scaler. The VGA Scaler connects to the 14.318 MHz clock through a long wire. The addition to the clock signal line of this wire in combination with the input capacitance of the VGA Scaler's FPGA causes significant distortion to the clock waveform. This distortion includes ringing and long rise times. While the slower response time of the ICs in the Apple II makes the Apple itself insensitive to this distortion of the clock signal, a more modern card such as RAM2E II is susceptible to these clock signal artifacts. In our testing, the jumper wire arrangement can cause instability and periodic memory errors in RAM2E II. Adding an additional 50 Ω series resistance to the clock wire going to the VGA Scaler minimizes the impact of the wire arrangement and allows the system to run stably. Alternatively, the 14 MHz clock can be buffered with a fast propagation delay buffer, thus isolating the clock networks and mitigating the clock artifacts.

Installation

RAM2E II must be installed into the Apple IIe auxiliary slot. Do not install the card into one of the seven expansion card slots. Also ensure that RAM2E II is inserted in the correct orientation. Markings on the card indicate the side which must face towards the power supply of the Apple IIe.

Changing RAM Capacity

In order to maximize compatibility, the memory capacity of RAM2E II can be changed to 64 kilobytes, 512 kilobytes, 1 megabyte, 4 megabytes, or 8 megabytes. The capacity can be set either temporarily until the Apple IIe is powered off, or in nonvolatile memory where the setting will persist.

Capacity adjustment is accomplished using the “GWRAM” utility program available for download from our website at <http://garrettsworkshop.com/files/GWRAM/GWRAM.po>. The program is packaged as a 140 kB .po format disk image containing the GWRAM utility and ProDOS 2.4.2.

After launching GWRAM on an Apple IIe with a RAM2E II card, the following menu is shown:

```
-- RAM2E Capacity Settings --
Current RAM2E capacity: 512 kB
Select desired memory capacity:
  1. 64 kilobytes
  2. 512 kilobytes
  3. 1 megabyte
  4. 4 megabytes
  5. 8 megabytes

Capacity will be saved until power-off.
To remember capacity setting in
nonvolatile memory, press Apple+number.
Press [Q] to quit
```

For example, by pressing the “1” key, the capacity can be set to 64 kilobytes until the computer is powered off. By pressing Apple+1 (open-Apple or closed-Apple), the 64 kilobyte capacity setting can be saved in nonvolatile memory as well, so that it is restored on power-up.

Technical Specifications

Physical Dimensions

Parameter	Value
Height	50.038 mm \pm 0.2 mm
Width	78.232 mm \pm 0.2 mm
Thickness	< 4 mm
Weight	< 28 g

Electrical Specifications

Specifications are valid over temperature range of 0 °C – 85 °C and $V_{CC} = 4.5\text{ V} - 5.5\text{ V}$.

Parameter	Value	Conditions
V_{IHmin}	2.0 V	
V_{ILmax}	0.8 V	
V_{OHmin}	3.8 V	$I_{OH} = -8\text{ mA}$
V_{OLmax}	0.5 V	$I_{OL} = 8\text{ mA}$
Output Slew Rate	< 1.5 V/ns	
I_{Imax}	$\pm 20\ \mu\text{A}$	$V_{in} = 0\text{ V} - 5.5\text{ V}$
C_{IOmax}	20 pF	data bus MD[7:0], C14M clock signal
	10 pF	all other signals
I_{CCmax}	120 mA	