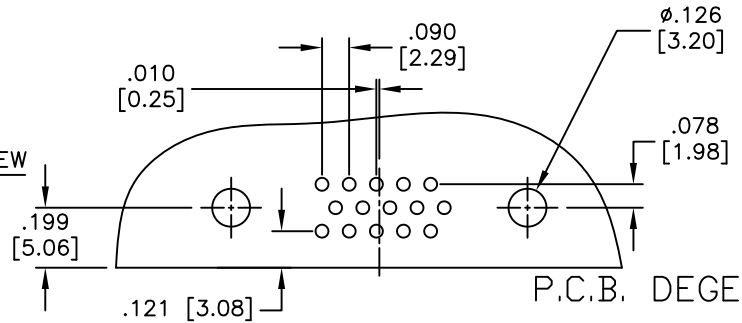
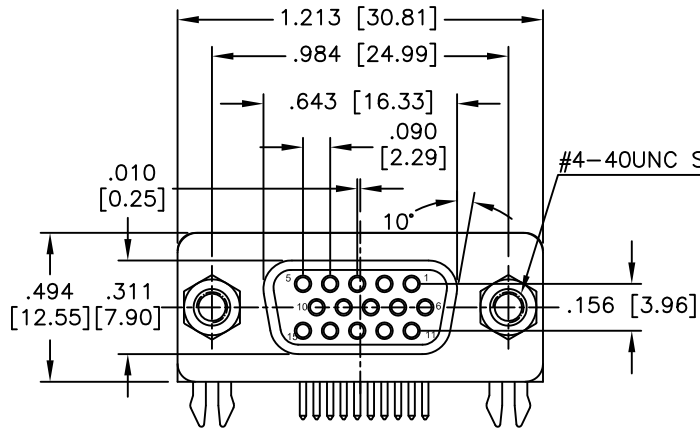
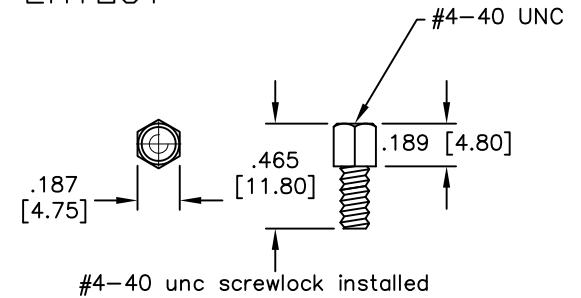
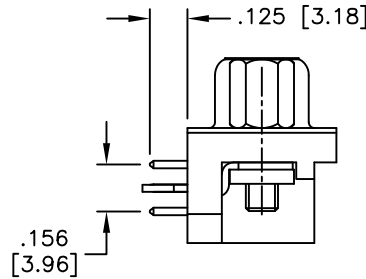
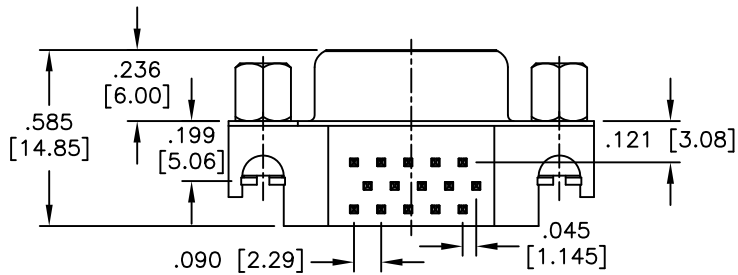


APPROVED: _____
 DATE: _____ TITLE: _____

Rev	AWO #	Description	Date	Appr
-		RELEASED	8/30/05	
A		REDRAWN	7/14/11	
B		REVISED SHAPE	9/7/11	



RECOMMENDED P.C.B. LAYOUT



SPECIFICATIONS:

Material:
 Insulator: PBT, glass reinforced, rated UL 94V-0
 Insulator color: Black
 Contacts: Brass
 Shell: Steel, Tin plated
 Clinch Nut: Brass, Nickel plated
 Boardlock: Brass, Nickel plated
 Screwlock: Brass, Nickel plated
 Plating:
 Gold flash over Nickel underplate on contact area,
 Tin over Copper underplate and tails
 Electrical:
 Voltage rating: 250 VAC rms
 Current rating: 3 Amps max
 Contact resistance: 20 mohms max
 Insulation resistance: 1,000 Mohms min
 Dielectric withstanding voltage: 1,000 VAC for 1 minute
 Environmental:
 Lead free, RoHS compliant



UNLESS OTHERWISE SPECIFIED
 ALL DIMENSIONS ARE INCHES [MM]
 TOLERANCES: EXCEPT AS NOTED

INCHES		HOLES	
.X	± .10	ϕ .X	± .10
.XX	± .020	ϕ .XX	± .015
.XXX	± .015	ϕ .XXX	± .010

APPROVALS		DATE
DRAWN	SS	8/30/05
CHECKED		
APPROVED		

ADAM TECH

909 Rahway Avenue, Union, NJ 07083
 Phone: 908-687-5000 Fax: 908-687-5710

TITLE: .197 [5.00] SLIMLINE D-SUB SOCKET
 FORKED BOARDLOCKS, #4-40 JACKSCREWS

SIZE	PART NO.	REV.
X	HD15-SN-25	B
REF: S00087T	SCALE: NTS	SHEET 1 OF 1