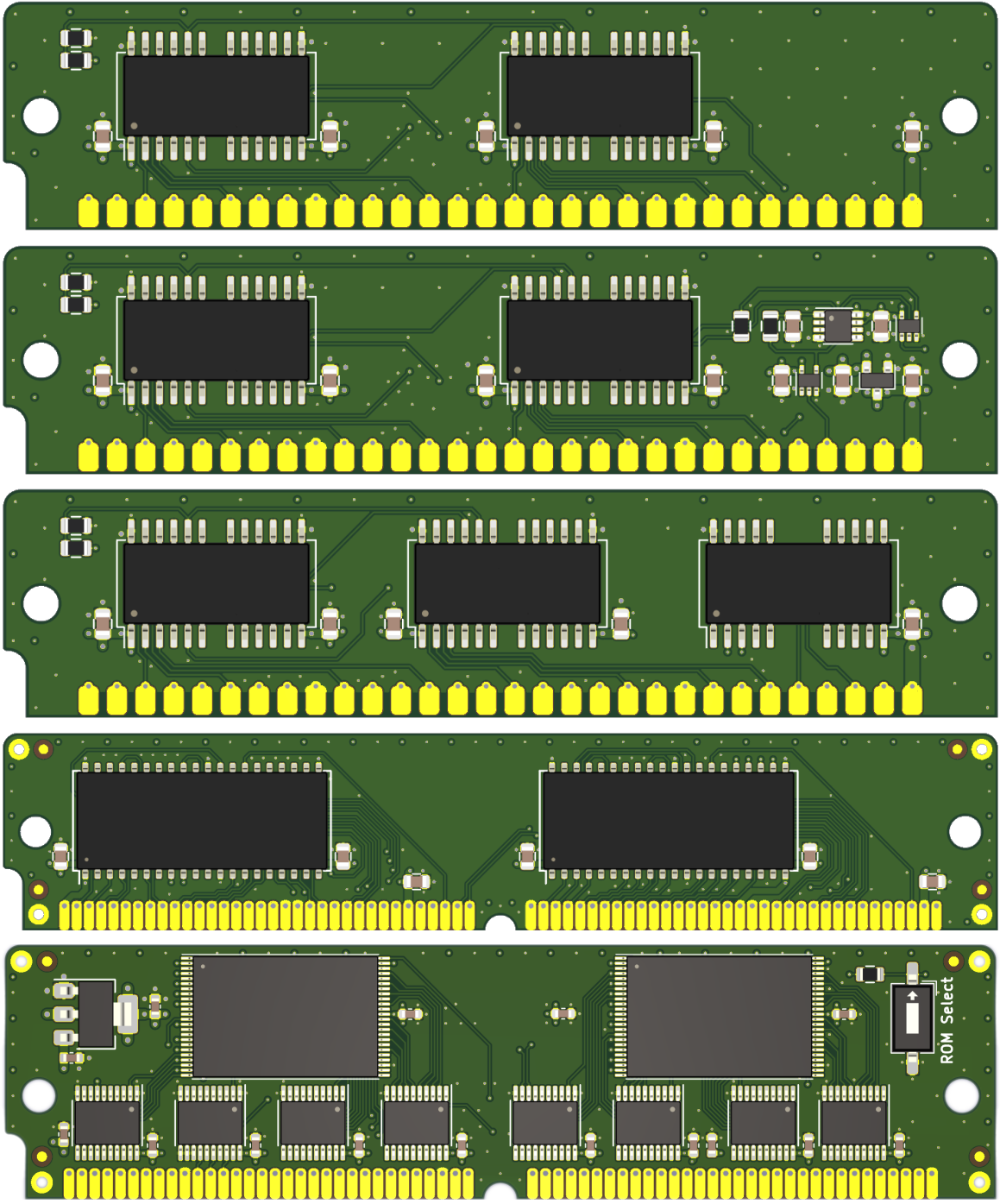


Garrett's Workshop

Memory SIMM Troubleshooting Guide

For DRAM, VRAM, and ROM SIMM Products



Users may have trouble getting new-manufacture memory SIMMs to work in old-manufacture systems. Because of an industry-wide transition from imperial to metric units, the nominal thickness of new-manufacture SIMMs is approximately 1/14th of a millimeter thinner than legacy SIMMs. In addition, aging SIMM sockets may not retain the SIMMs as tightly as they did when new, especially sockets with plastic retaining clips. Because of this fitment issue, many users have reported issues getting new SIMMs to work in their systems. This installation guide covers fitment troubleshooting using the “fitment stickers” included with Garrett’s Workshop SIMM products since March 2022. It does not include specific instructions on installing SIMMs in your machine. For specific installation information, please refer to your computer’s manual.



Adhering the Fitment Stickers

When applying the stickers, line the hole on the sticker up with the hole on the side of the SIMM. At the same time, press your finger against the left/right edge of the SIMM so as to align the sticker with the SIMM edge and prevent it from running off the edge of the SIMM. Once the sticker is in the correct place, press firmly with your thumb in order to strongly affix it to the SIMM board. A few extra stickers are always included in case of a mistake applying the sticker.